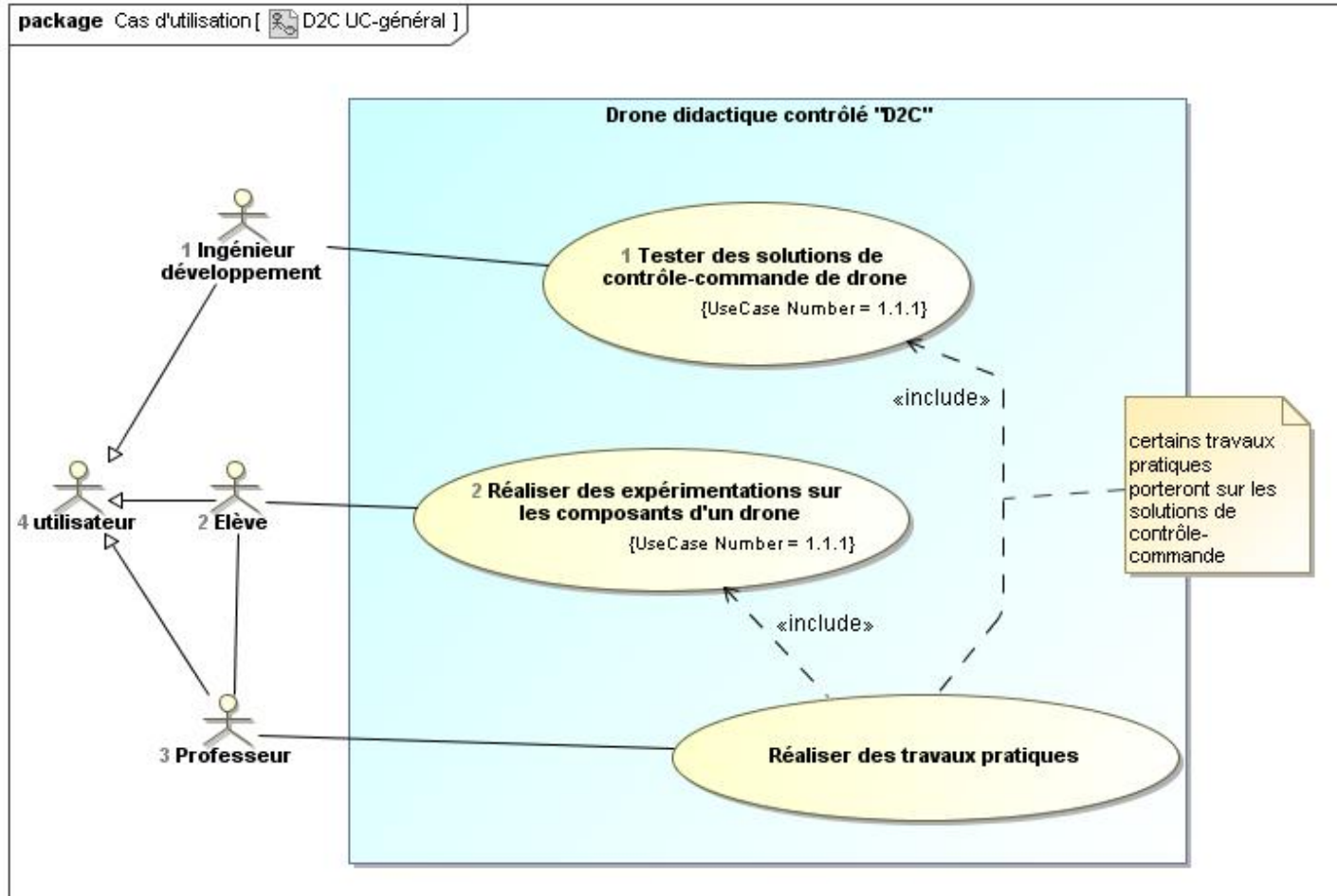


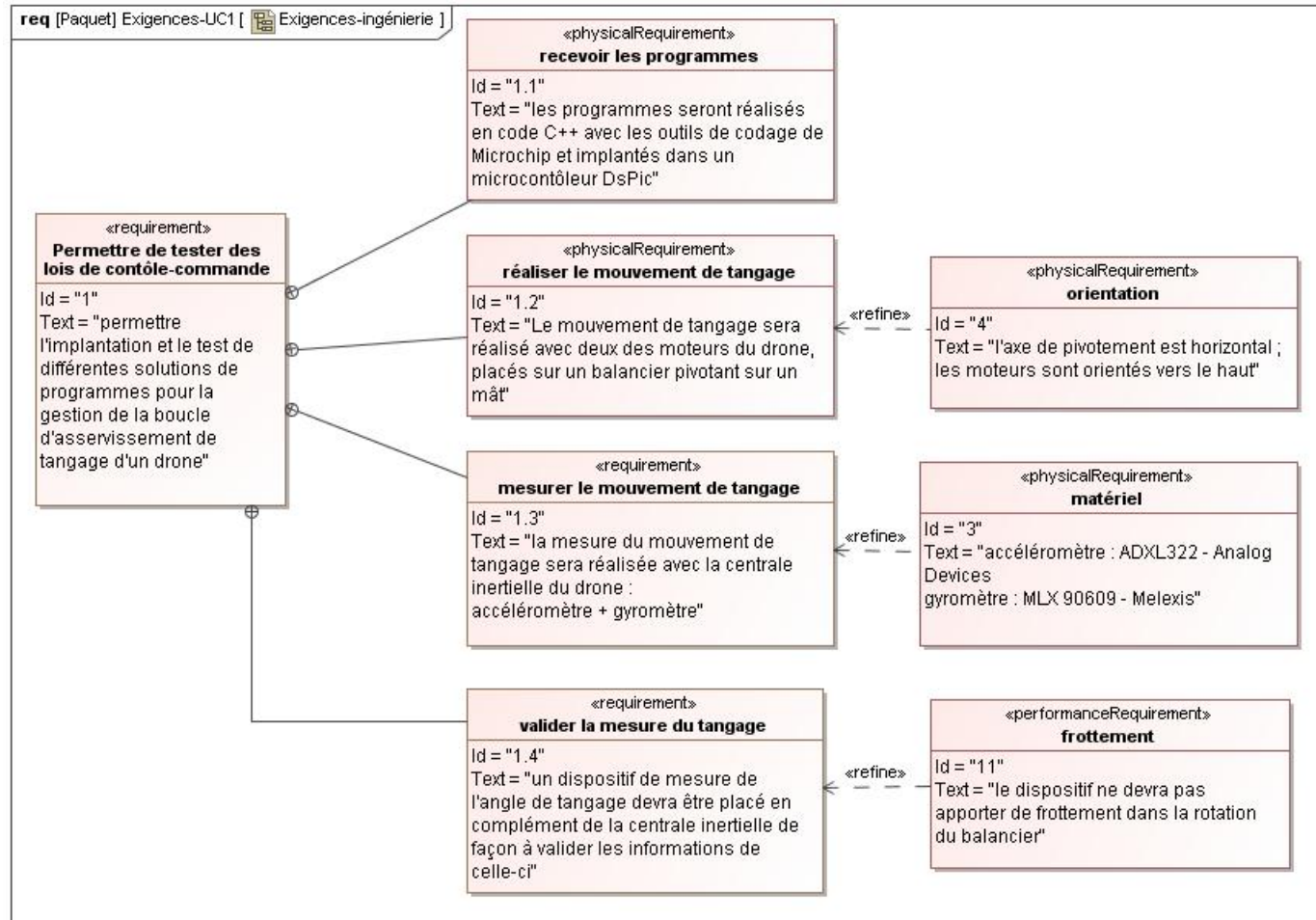
# Drone Didactique Contrôlé D<sup>2</sup>C



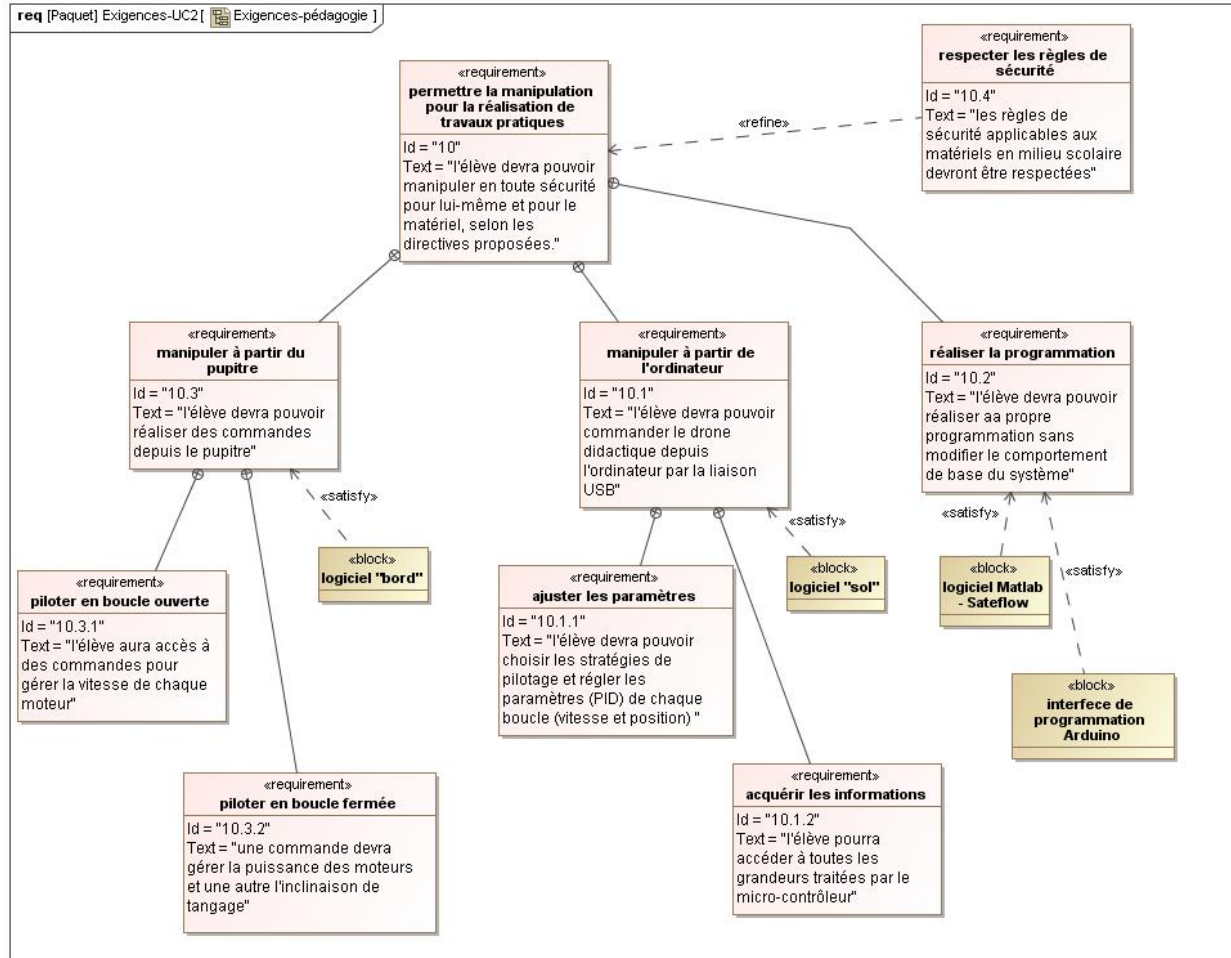
# D2C UC-général



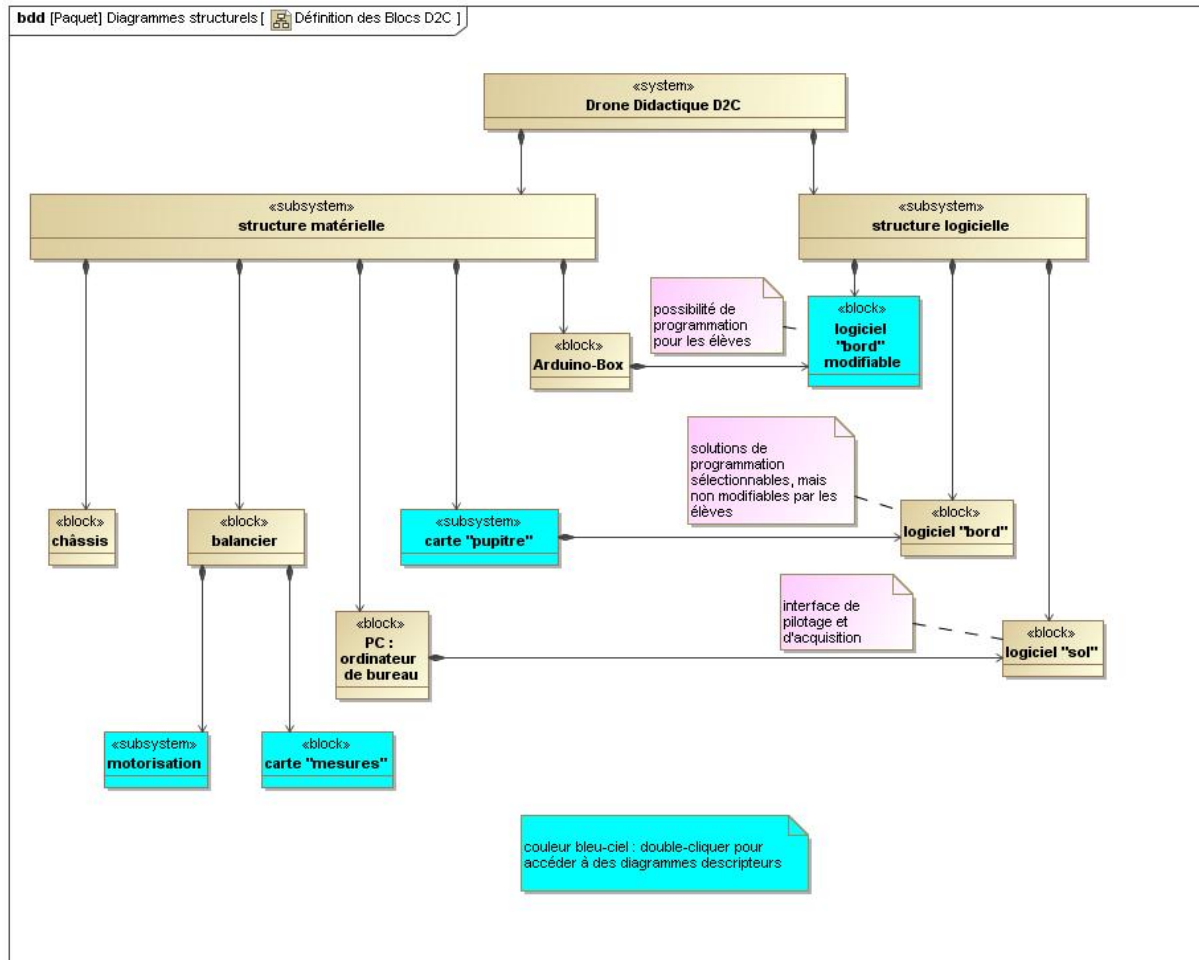
# Exigences-ingénierie



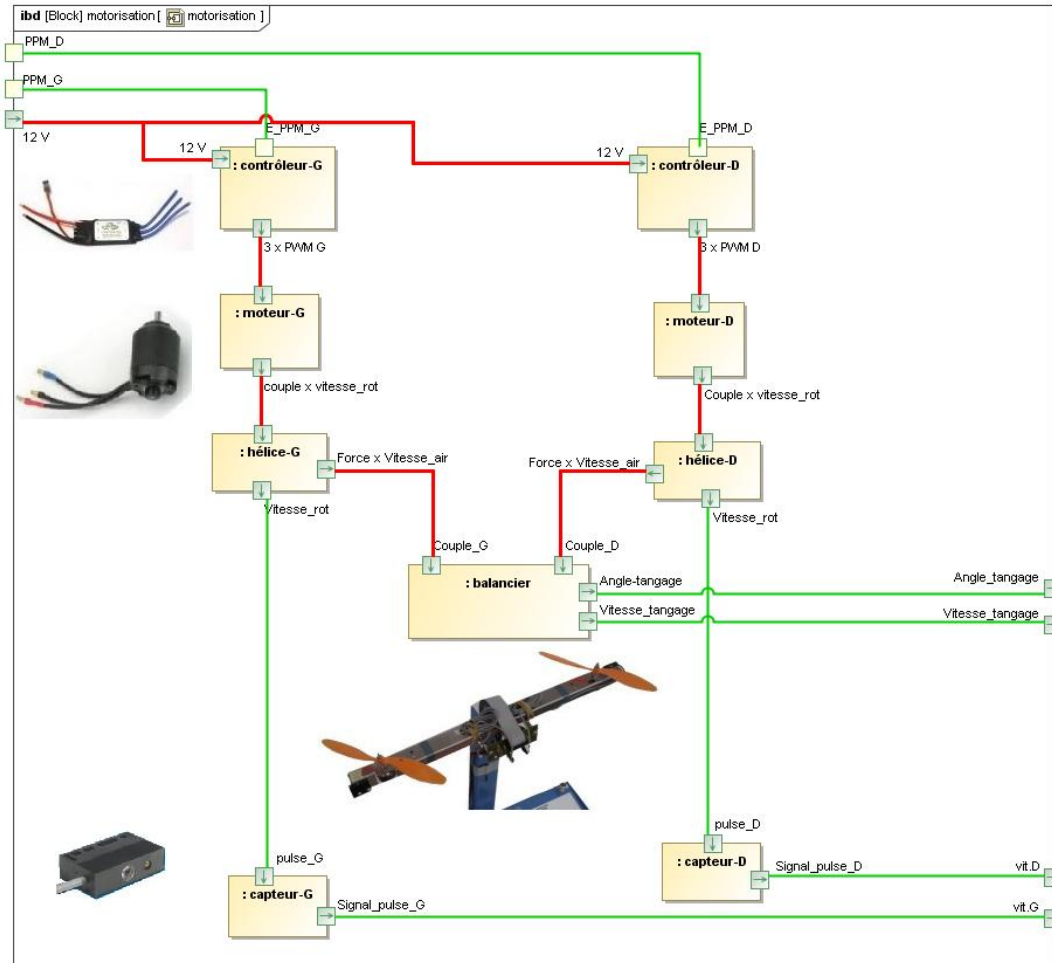
# Exigences-pédagogie



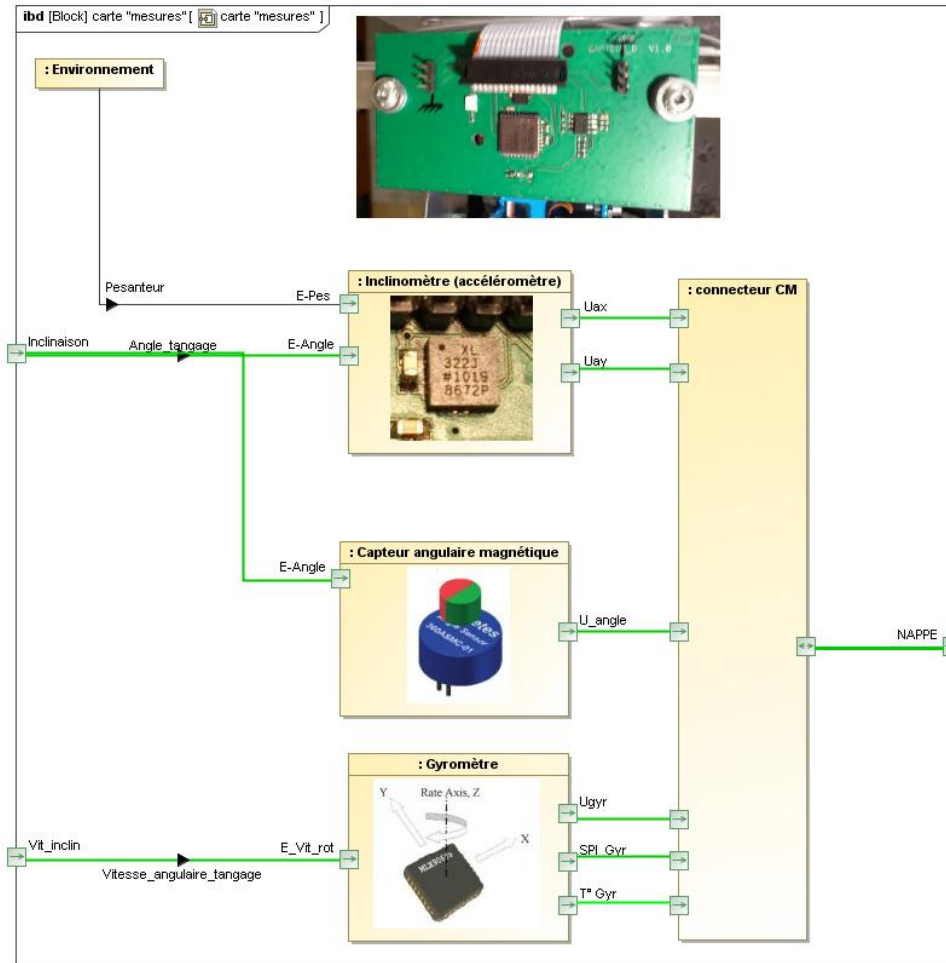
# Définition des Blocs D2C



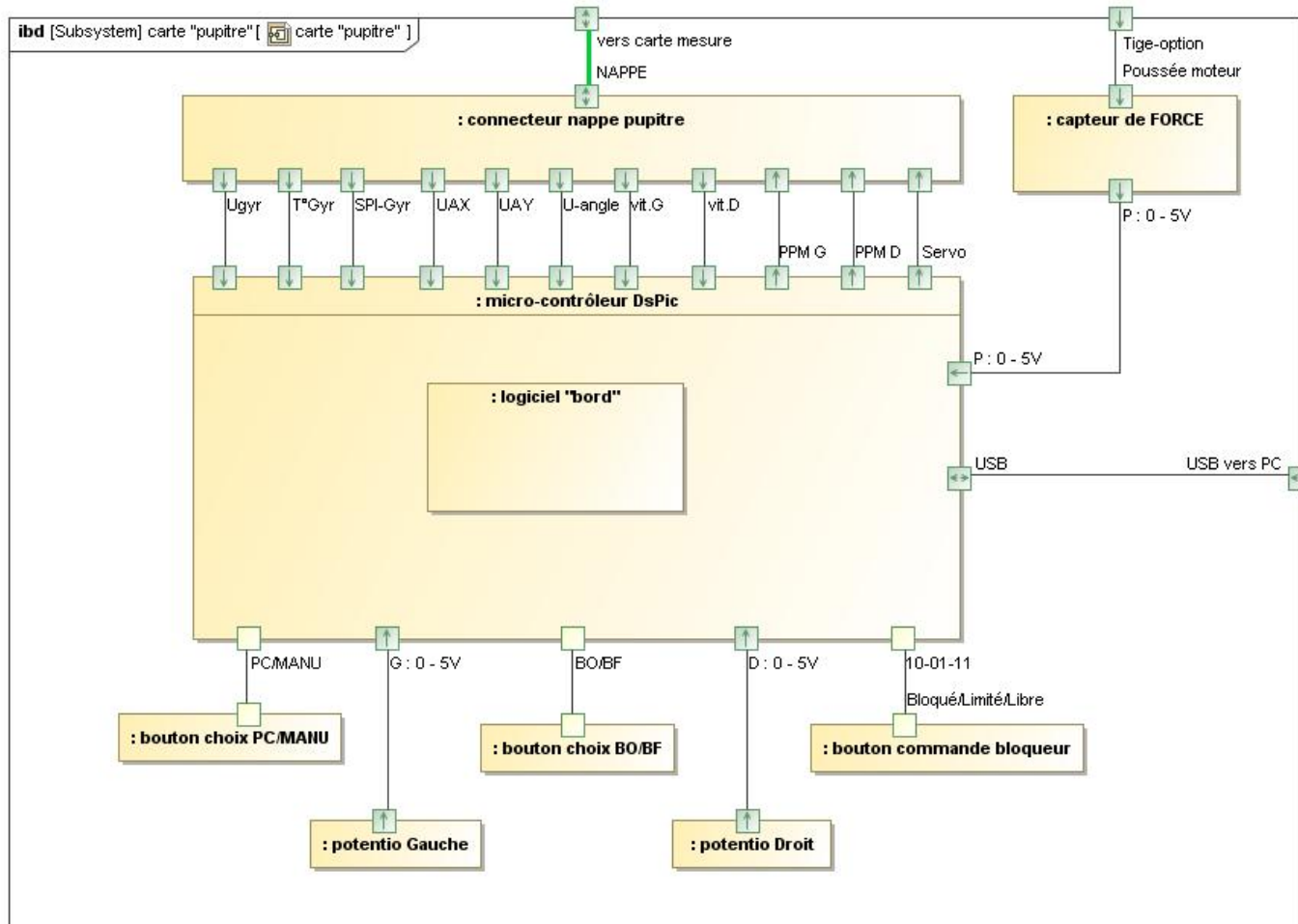
# motorisation



# carte "mesures"

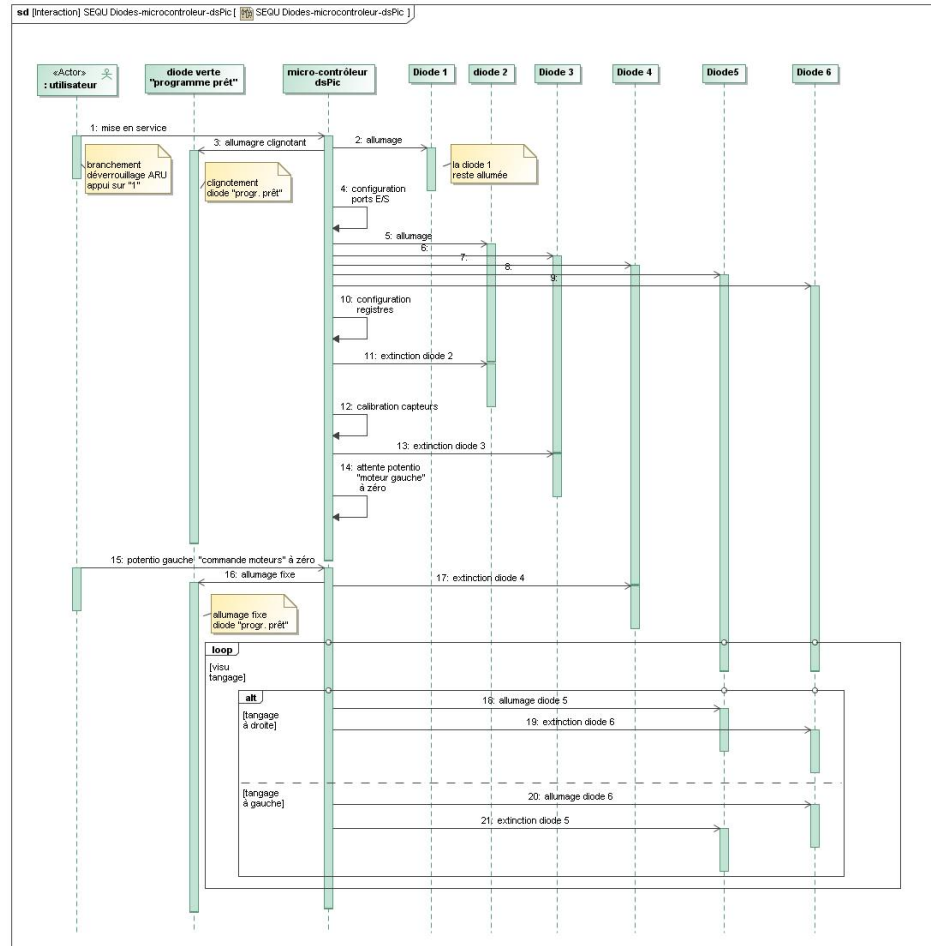


# carte "pupitre"

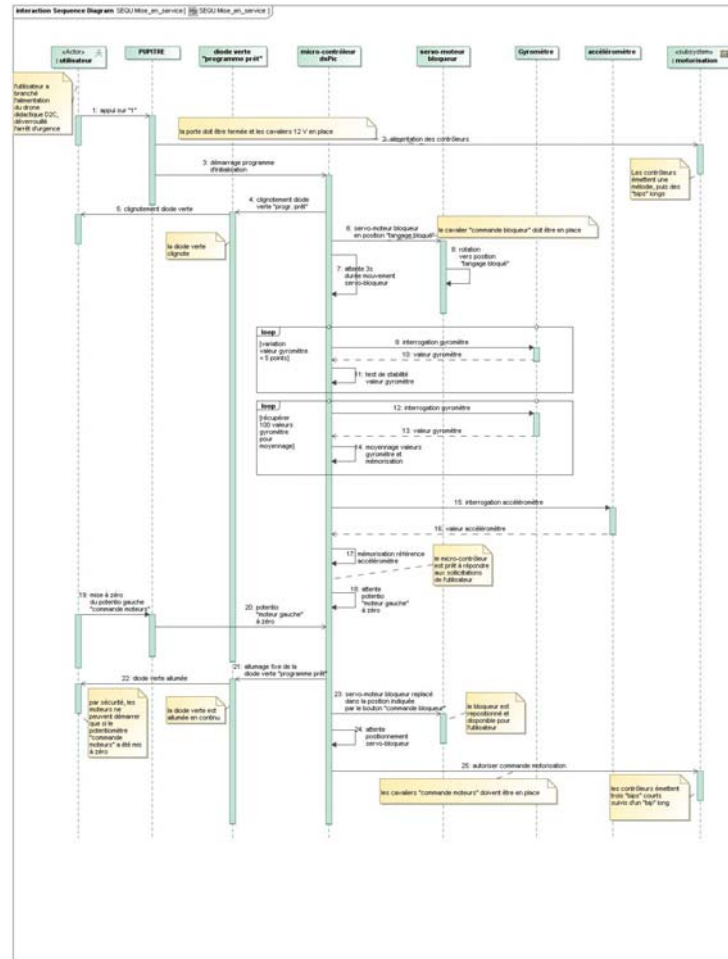




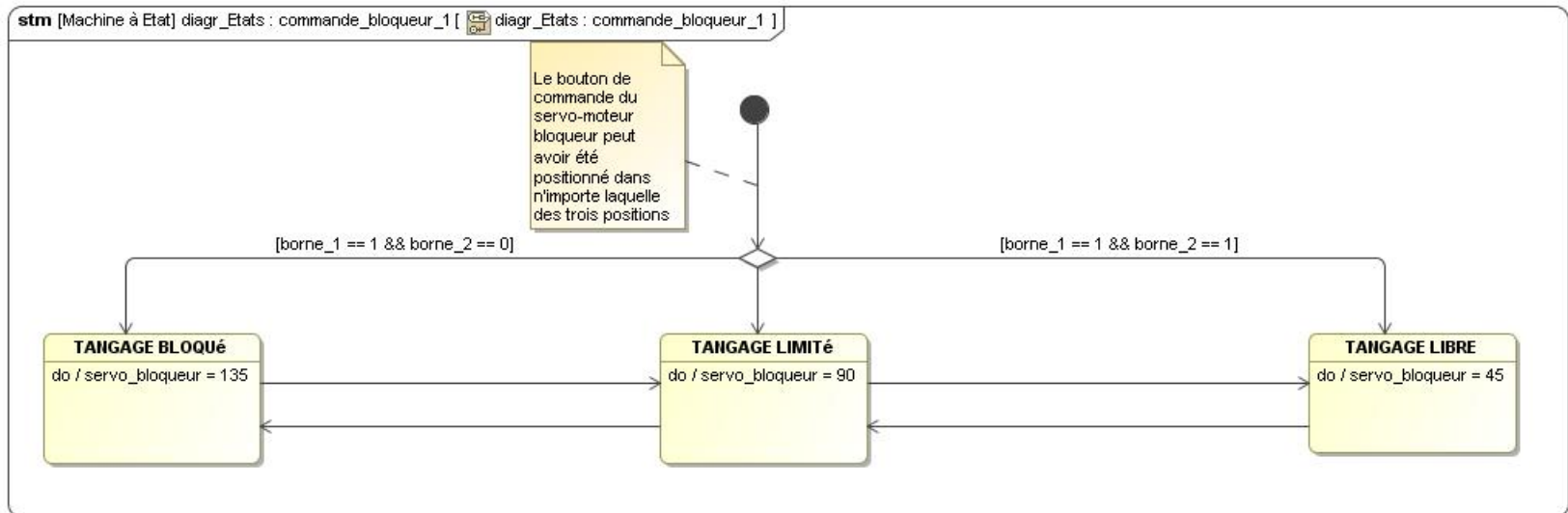
# SEQU Diodes- microcontrôleur-dsPic



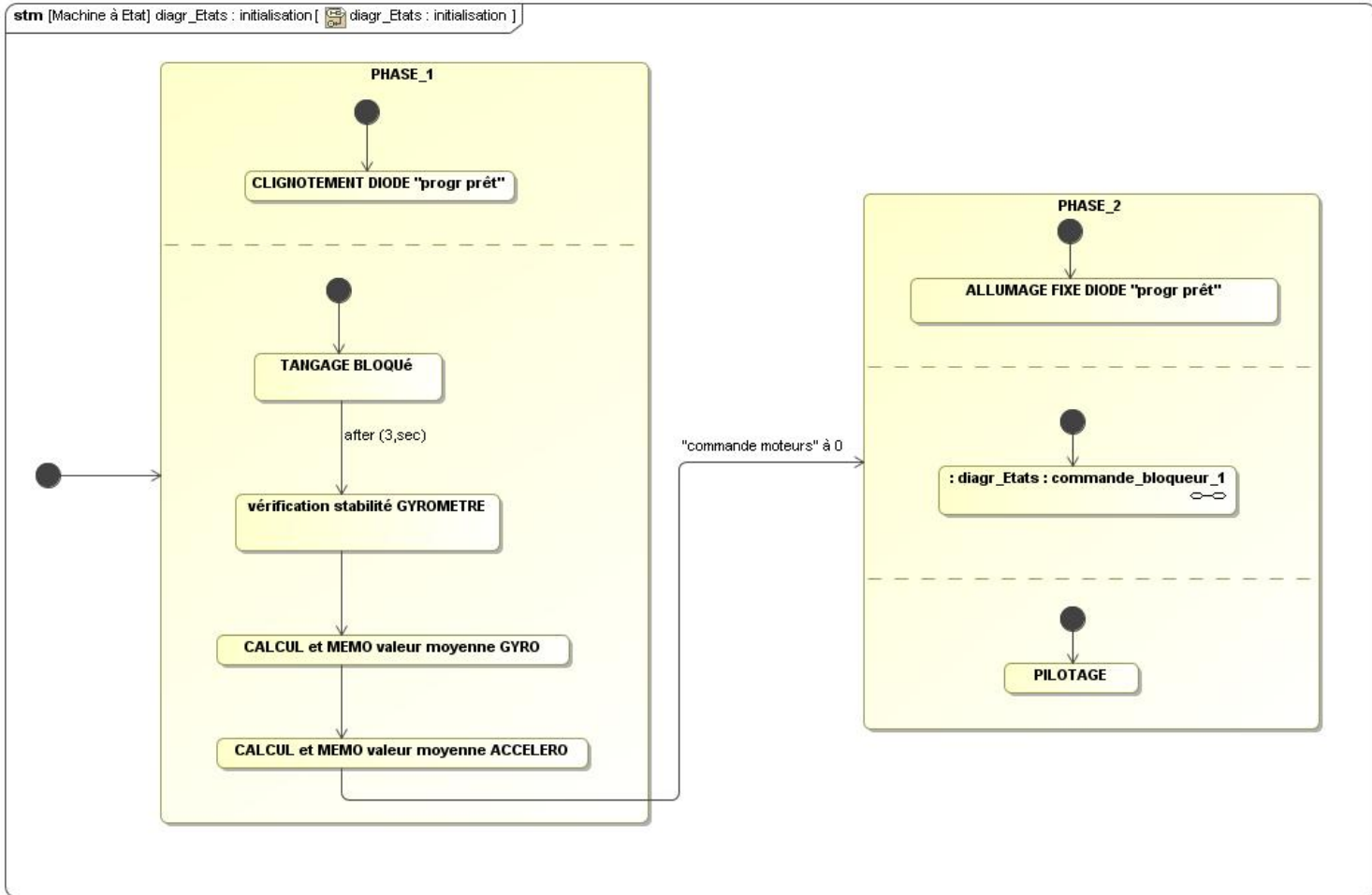
# SEQU Mise\_en\_service



# diagr\_Etats : commande\_bloqueur\_ 1



# diagr\_Etats : initialisation



# logiciel "bord" modifiable-integrateur

