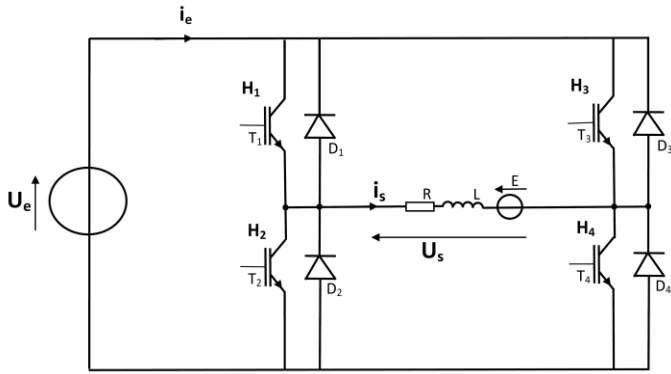
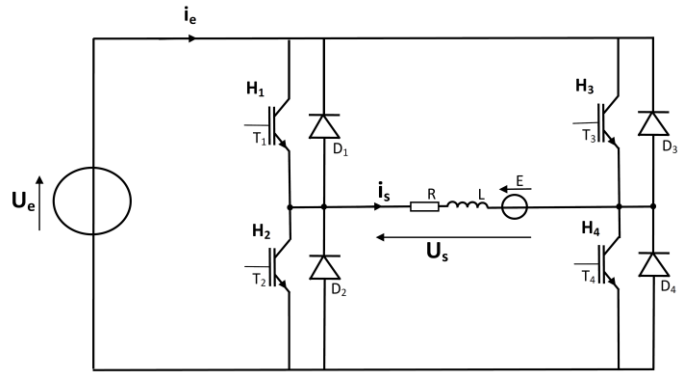


CORDEUSE_A2_DR1

Q7 $0 < t < \alpha T$

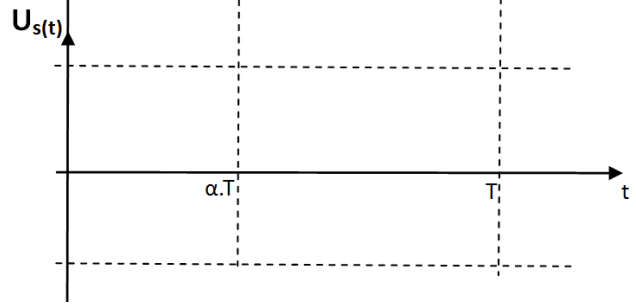


Q8 $\alpha T < t < T$



Q9

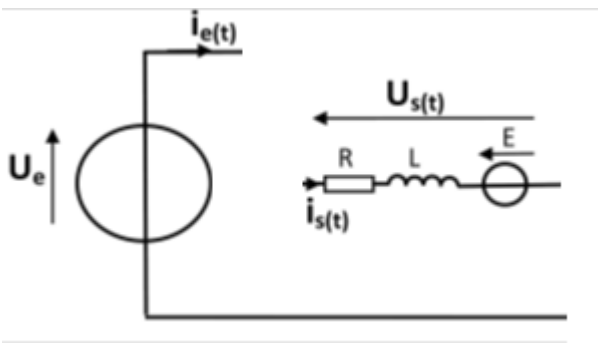
Interrupteurs commandés H_1 et H_4 H_2 et H_3



Q10

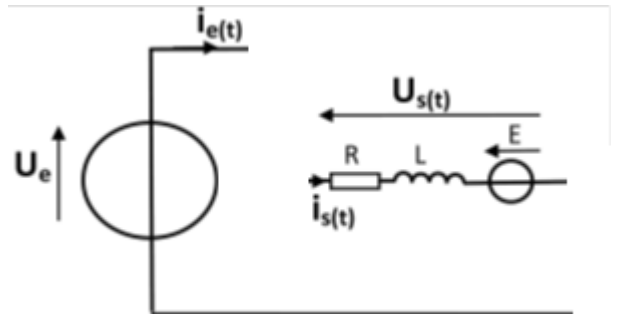
Q11

$0 < t < \alpha T$



Q12

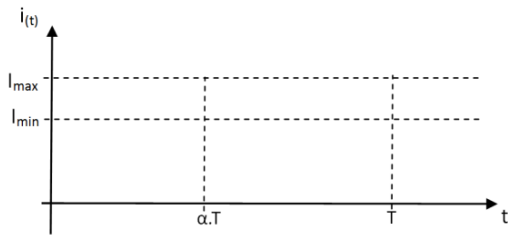
$\alpha T < t < T$



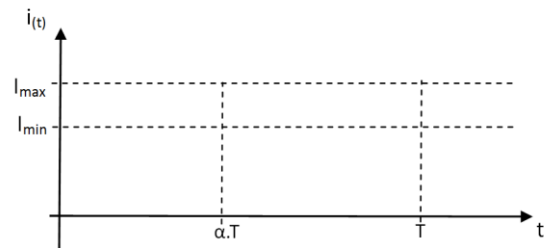
Q13 $0 < t < \alpha.T$

Q14 $\alpha.T < t < T$

Q15 $0 < t < \alpha.T$



Q16 $\alpha.T < t < T$



Q17 Calcul de Δj_s

Q18

Q19

Q20

Q21